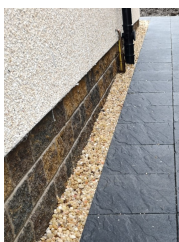


Product Datasheet
STANDARD FLAGS

- We charge no more for colour than for grey and given our colour definition with German (Lanxess) iron oxide long lasting pigments, it's a great way to bring colour to your space.
- Enhanced durability utilising the most modern German manufacturing technology
- Reduced efflorescence, as unlike most flags on the market this product is cured in a climate controlled environment after production.
- Combines a superb smooth texture, with impressive slip resistance attributes affording a more professional, yet safer flag

Product type	Standard concrete flag
Manufacturing process	Hydraulically pressed ; semi-dry
Manufactured to	BS EN 1339:2003
Finish	Standard smooth or riven
Strength	Compliant to BS EN 1339:2003
Slip/Skid resistance	>70 USRV (extremely low)
Chamfer	Pencil line chamfer
Surface layer	Higher intensity of pigment and cement on the wearing course
Efflorescence	Products placed in a climate controlled curing chamber to minimise its occurrence & severity
Recyclable	100% can be recycled
Application	Domestic, commercial & industrial



product	size (mm)	colours manufactured	no./pack	weight/pack (kg)
standard flag smooth	600 x 600 x 50	grey, charcoal	24	1,080
standard flag riven	600 x 600 x 50	grey, charcoal, red & buff	24	1,080
standard flag smooth	600 x 450 x 50	grey, charcoal	48	1,480
standard flag - riven	600 x 450 x 50	grey, charcoal, red & buff	48	1,480
standard flag Smooth	450 x 450 x 50	grey, charcoal	48	1,100
standard flag riven	450 x 450 x 50	grey, charcoal, red & buff	48	1,100

Laird Standard Flag range are sold and intended to serve the 'budget' utility end of the market, while tough and hard wearing should not be confused with premium products such as Valhalla Flags and others that can be used for feature patios. Therefore, colours may vary significantly. We explicitly sell standard flags on their hard wearing and utility features and do not recognise any issues regarding aesthetics and colour variation.